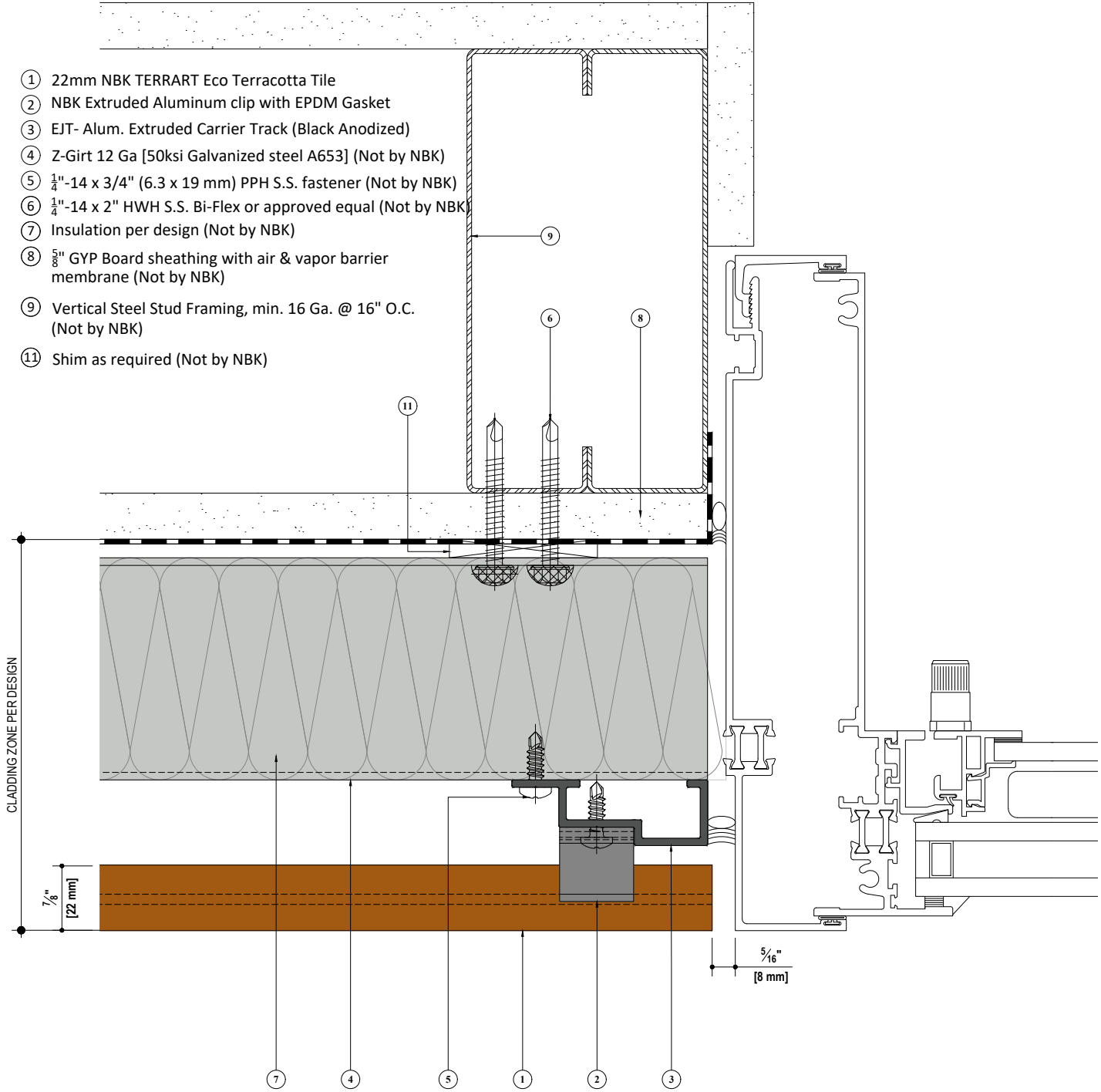


- ① 22mm NBK TERRART Eco Terracotta Tile
- ② NBK Extruded Aluminum clip with EPDM Gasket
- ③ EJT- Alum. Extruded Carrier Track (Black Anodized)
- ④ Z-Girt 12 Ga [50ksi Galvanized steel A653] (Not by NBK)
- ⑤  $\frac{1}{4}$ "-14 x  $\frac{3}{4}$ " (6.3 x 19 mm) PPH S.S. fastener (Not by NBK)
- ⑥  $\frac{1}{4}$ "-14 x 2" HWH S.S. Bi-Flex or approved equal (Not by NBK)
- ⑦ Insulation per design (Not by NBK)
- ⑧  $\frac{5}{8}$ " GYP Board sheathing with air & vapor barrier membrane (Not by NBK)
- ⑨ Vertical Steel Stud Framing, min. 16 Ga. @ 16" O.C. (Not by NBK)
- ⑪ Shim as required (Not by NBK)



SYSTEM: \_\_\_\_\_  
**TERRART 22 ECO**

DETAIL: \_\_\_\_\_  
**STANDARD STUDWALL DETAIL**

DETAIL NUMBER: \_\_\_\_\_  
**NBK-22-05**

TILE DIRECTION: \_\_\_\_\_  
**HORIZONTAL**

DRAWING REFERENCE: \_\_\_\_\_  
**FLUSH JAMB**

SCALE: \_\_\_\_\_  
**1:2**

**NBK** | ARCHITECTURAL  
 TERRACOTTA  
 A Hunter Douglas Company

**NBK North America**

10 Federal Street, Second Floor  
 Salem, MA 01970  
 Telephone: +1 (781) 639 2662  
 www.nbkterracotta.com